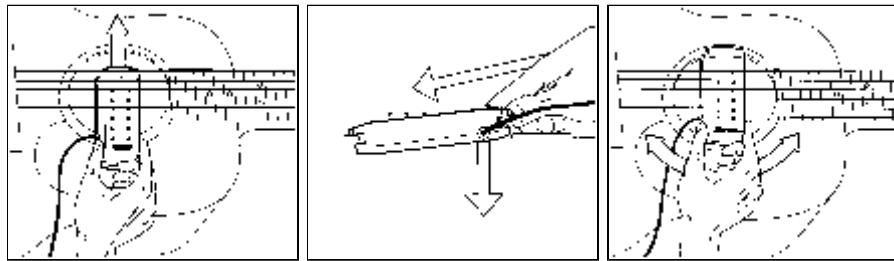




## DiMarzio Elemental™, Super Natural™ and Virtual Acoustic™ models

**Important: Read all of the following instructions before proceeding. If any questions or problems arise, you may refer them directly to us.**



The Elemental™, Super Natural™ and Virtual Acoustic™ are designed to work with round-hole, acoustic guitars. They should install in all guitars with sound hole diameters between 311/16" and 41/8". Please note: these pickups are magnetic, and will not work with nylon strings. The magnetic field is shaped to produce a balanced, even sound with standard bronze string sets. If your guitar has strings of a different alloy or arrangement (for example, E, B and G strings unwound), please contact DiMarzio for information on achieving a correctly-balanced sound.

The Elemental™, Super Natural Plus™ and Virtual Acoustic™ should be installed with the volume control on the high E side of the sound hole. The Super Natural™ should be installed with the polepieces towards the neck. To maintain correct string balance, left-handed guitars with have the pickup installed in the reverse direction, with the polepieces towards the bridge.

It is possible to install your pickup while the guitar is in playing position, but we recommend putting the guitar on a flat, non-scratching surface so both hands can be used.

1. Slide the pickup under the strings from the high E (treble) side. The cable will exit from the high E side. You should not have to loosen or remove the strings, though either of these conditions can make installation easier. If the strings are up to pitch, you will have to raise

the strings a little by hand to allow clearance for the pickup.

2. Line up the pickup in the center of the sound hole, and engage the mounting “jaw” with the sound hole on the low E side of the guitar so the rubber insert compresses against the edge of the sound hole. Continue pushing in this direction until you can engage the high E side of the pickup with the sound hole. You should not have to use a great deal of force to do this. Once the pickup is in the sound hole, you should be able to shift it from side to side to get proper alignment with the strings.

3. For best results, we recommend mounting the pickup flush to the guitar’s face. Do not do this by forcing the pickup against the face of the guitar; instead, rotate the pickup back and forth while applying gentle downward pressure to allow the rubber inserts to “learn” the shape of the sound hole and grab it solidly. When the pickup is installed where you want it, you’re ready to go.

The polepieces on the Super Natural™, Elemental™ and Virtual Acoustic™ have been balanced for bronze strings. If one string needs to be a bit louder to balance with the others, slightly raising the polepiece of the Super Natural™ or both polepieces of the Elemental™ or Virtual Acoustic™ for that string should correct the problem. You may notice that the B string poles and the bridge-side high E pole on the Elemental™ and Virtual Acoustic™ do not produce much noise when tapped with a screwdriver. This is normal. These polepieces have been calibrated for correct string volume with bronze string sets with a wound G string. If other string types or gauges are used, contact DiMarzio for replacement polepieces.

On right-handed guitars, the volume control of the Elemental™, Super Natural Plus™ and Virtual Acoustic™ will be off when it is pointed towards the bridge of the guitar. We recommend that you always have these pickups turned off when plugging into an amp. In the case of the Super Natural™, be sure the amp volume is all the way down when plugging in. You should be able to run the preamp gain of most amps at a relatively low setting, which is also what we recommend for the cleanest sound. The Super Natural Plus™, Elemental™ and Virtual Acoustic™ have a wider frequency response and dynamic range than most sound hole pickups. This will create some dramatic effects if you experiment with your amp’s tone controls, because your new pickup will give them a lot of sonic information with which to work.

Thank you for purchasing a DiMarzio acoustic pickup. If you have any questions or problems, please feel free to call us.

Fender, Stratocaster, Strat, Telecaster, Tele, Precision Bass, P-Bass, Jazz Bass and J-Bass are registered trademarks of Fender Musical Instrument Corp., with which DiMarzio, Inc. is not affiliated. Les Paul and Les Paul Junior are registered trademarks of Gibson Guitar Corp., with which DiMarzio, Inc. is not affiliated. Parker Fly is a registered trademark of Parker Guitars, with which DiMarzio, Inc. is not affiliated.

\*\*\*\*\*

**DiMARZIO, INC.**

1388 Richmond Terrace

Post Office Box 100387

Staten Island, NY 10310

Toll Free Order Desk (outside NYC): 800-221-6468

Customer Service (and NYC orders): 718-981-9286

Technical Assistance (12:00 PM - 5:00 PM ET): 718-816-8112

Fax: 718-720-5296